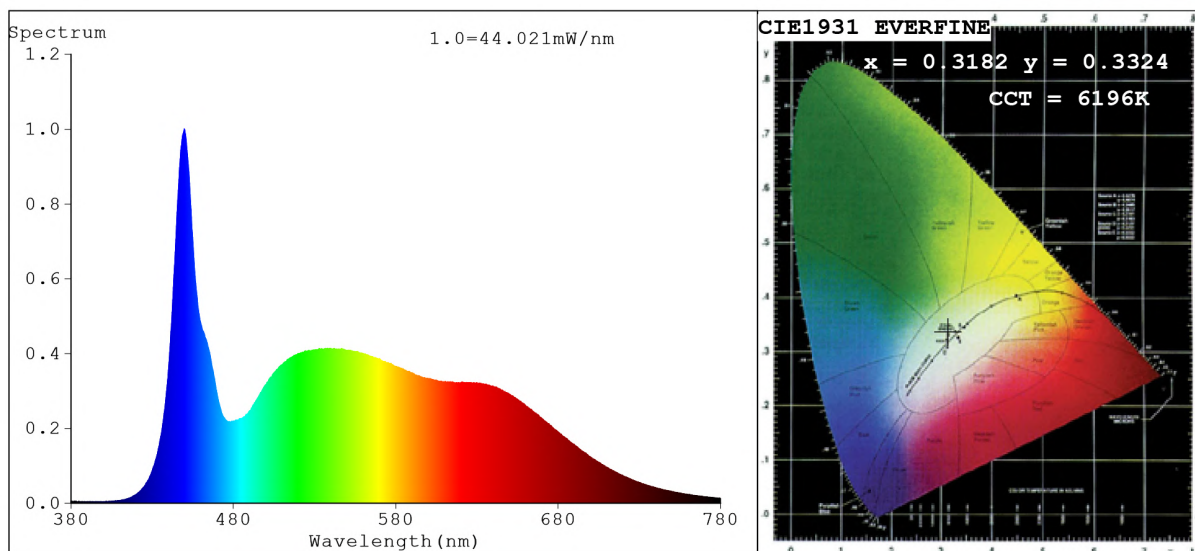


Spectrum Test Report



Color Parameters:

Chromaticity Coordinate: $x=0.3182$ $y=0.3324$ $u'=0.2004$ $v'=0.4709$
 CCT=6196K (Duv=0.0022) Dominant WL:Ld =490.9nm Purity=5.2%
 Ratio:R=15.1% G=79.2% B=5.7%; Peak WL:Lp=449.8nm FWHM=16.9nm
 Render Index:Ra=91.8 CRI=88.2 TM30:Rf=89 Rg=101
 R1 =92 R2 =92 R3 =90 R4 =93 R5 =92 R6 =87 R7 =95
 R8 =93 R9 =77 R10=80 R11=92 R12=65 R13=92 R14=94 R15=93

Photo Parameters:

Flux = 1186 lm Eff. : 144.12 lm/W Fe = 4.267 W Scotopic:2686 S/P:2.2647

Electrical parameters:

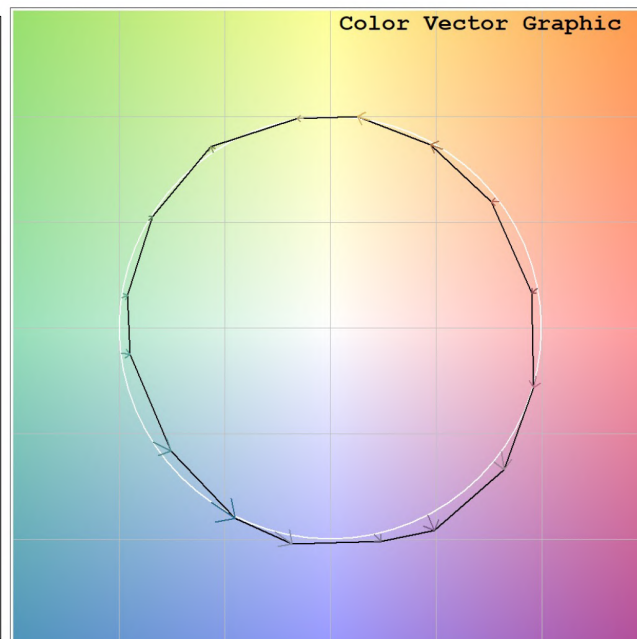
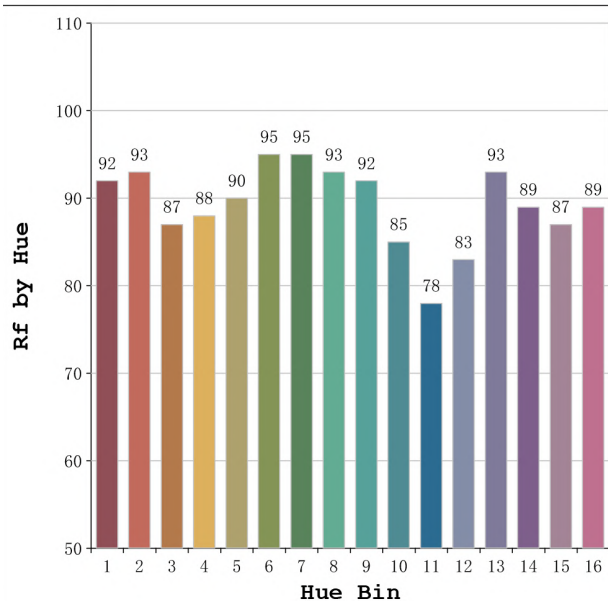
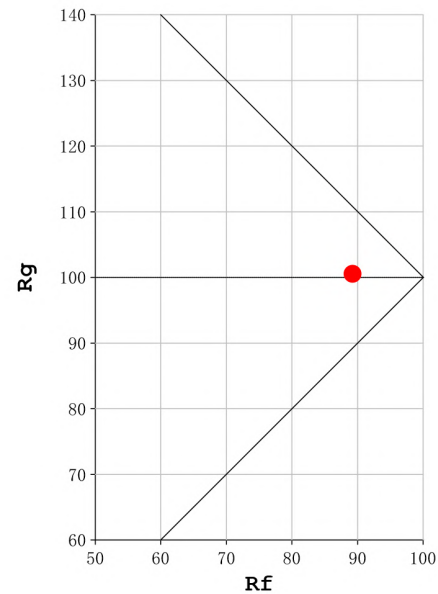
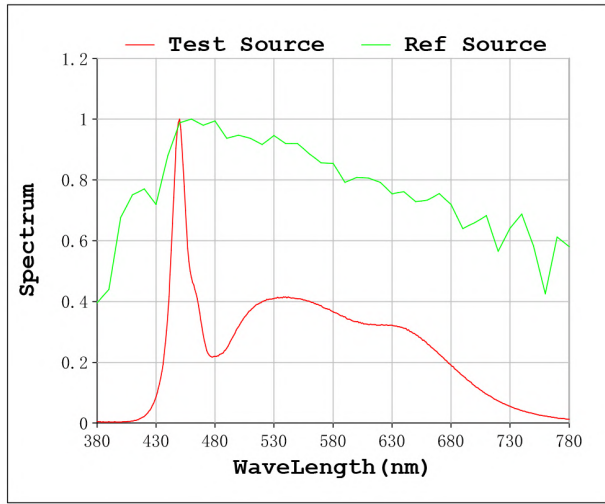
V = 11.998 V I = 0.6859 A P = 8.229 W PF = 1.000

Status: Integral T = 747 ms Ip = 37535 (57%)

Model:cob 8mm 6000k
 Tester:Sergio Carneros
 Temperature:20Deg
 Manufacturer:Luz Negra

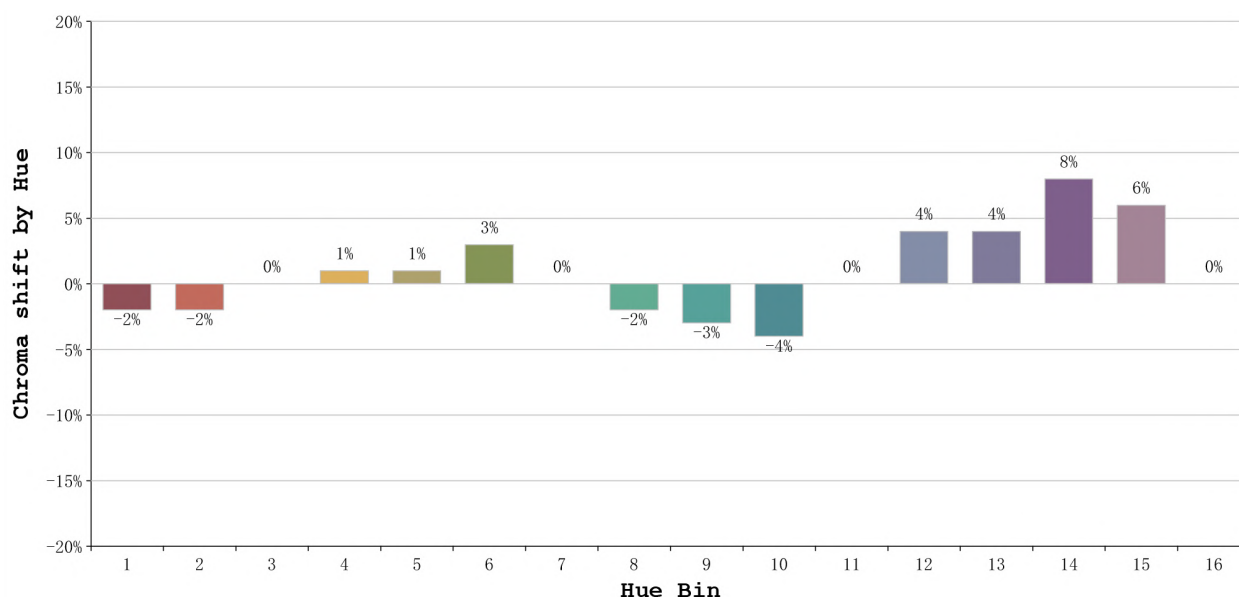
Number:31.148
 Date:2022-02-14 08:57:02
 Humidity:50%
 Remarks:100cm de tira flexible

Rf: 89 **CCT: 6196 K** **u': 0.2004**
Rg: 101 **Duv: 0.0022** **v': 0.4709**



Model:cob 8mm 6000k
 Tester:Sergio Carneros
 Temperature:20Deg
 Manufacturer:Luz Negra

Number:31.148
 Date:2022-02-14 08:57:02
 Humidity:50%
 Remarks:100cm de tira flexible



Hue Bin	Hue Angle	Rf	Graphic shift(%)	
			Chroma	Hue
1	0.0° - 22.5°	92	-2	0
2	22.5° - 45.0°	93	-2	2
3	45.0° - 67.5°	87	0	6
4	67.5° - 90.0°	88	1	6
5	90.0° - 112.5°	90	1	3
6	112.5° - 135.0°	95	3	0
7	135.0° - 157.5°	95	0	-2
8	157.5° - 180.0°	93	-2	-1
9	180.0° - 202.5°	92	-3	1
10	202.5° - 225.0°	85	-4	8
11	225.0° - 247.5°	78	0	13
12	247.5° - 270.0°	83	4	9
13	270.0° - 292.5°	93	4	3
14	292.5° - 315.0°	89	8	-1
15	315.0° - 337.5°	87	6	-5
16	337.5° - 360.0°	89	0	-5

Model: cob 8mm 6000k
 Tester: Sergio Carneros
 Temperature: 20Deg
 Manufacturer: Luz Negra

Number: 31.148
 Date: 2022-02-14 08:57:02
 Humidity: 50%
 Remarks: 100cm de tira flexible